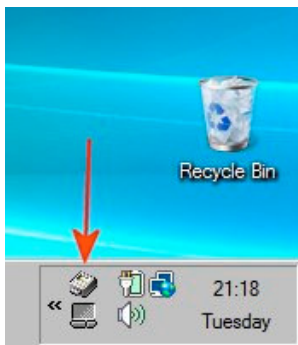


I didn't write this program so don't have an intimate knowledge of its workings. What follows is based on my experience and what works with my computer, printer and software. I accept no liability for any loss or damage caused by anybody else following it.

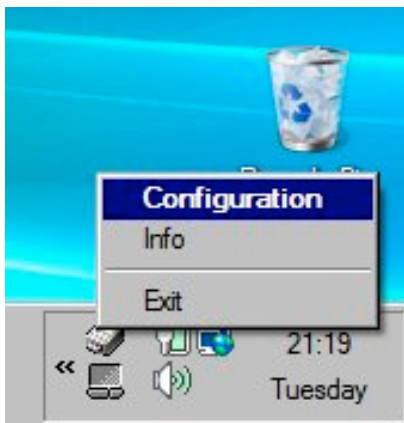
Installation is very simple. Just copy the WINPRINT.EXE file to wherever you want to put it, I've got it in the "Programs" folder on my C drive.

To start the program you can double-click on WINPRINT.EXE but it's easier to create a shortcut to it and then put that somewhere easy to get to: the Desktop, Start Menu or Quick Launch Bar.

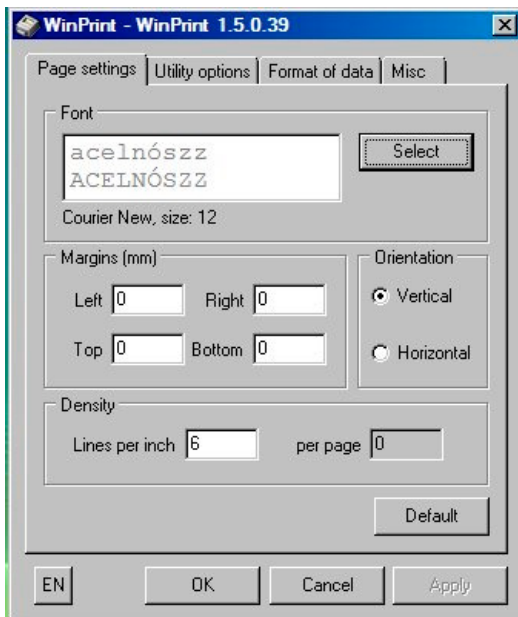
After starting it a logo will appear in the Notification Area



Right-click on that and select "Configuration"



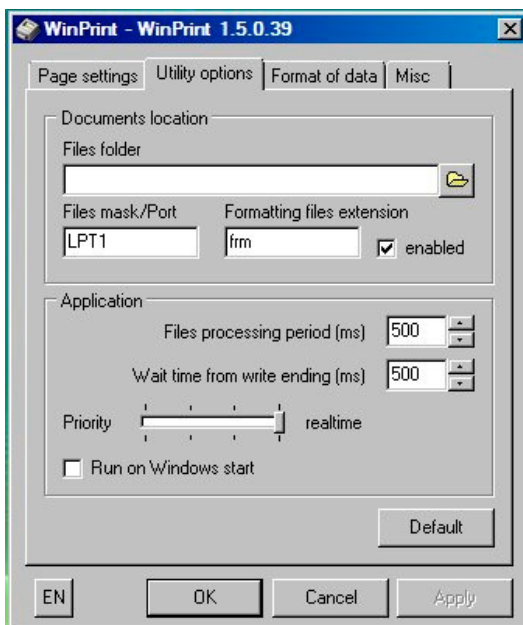
This will then appear



If the software you wish to print from can set margins itself set the ones in WinPrint to zero.

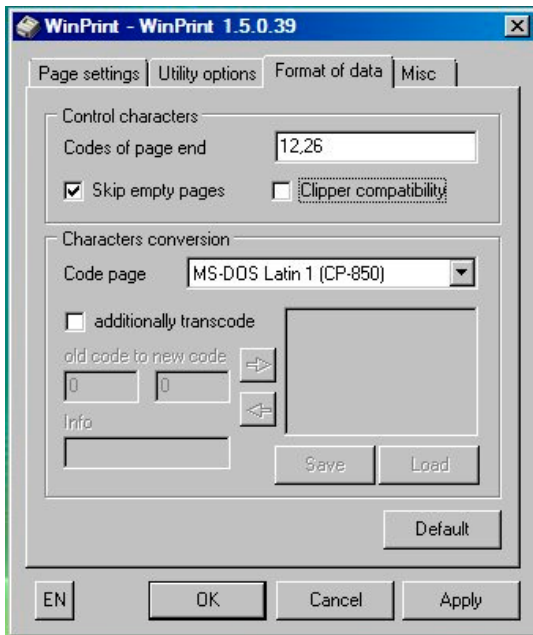
Courier New is the best font to use as every character is the same width.

Now click the Utility Options tab



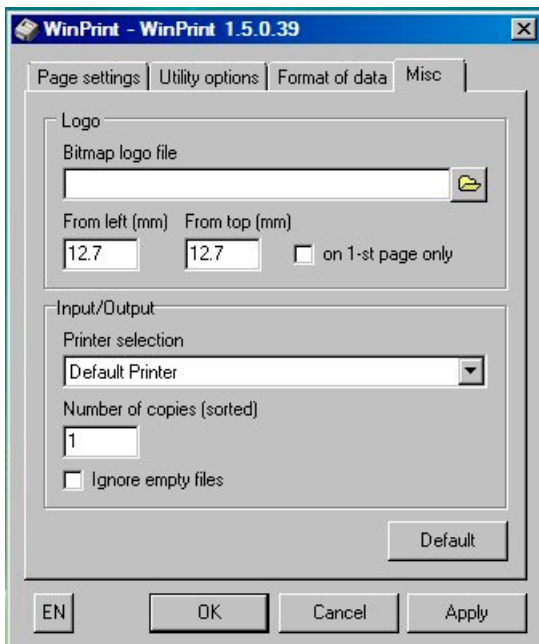
Here you need to enter the port that your DOS program expects to print to. Usually this would be LPT1

Now move on to Format of Data



Here you can choose the Code Page most appropriate to the language in which you wish to print.

Finally the Misc tab



Here you can choose which printer to actually use. "Default Printer" is the one set as Default in Windows but you can set it here to send the output to either a different real printer or a PDF writer.

You'll probably need to fiddle about with the settings in your DOS program to get things like margins the correct size and, if it gives you a choice, which printer to set it to for best results. Epsom FX80 or IBM ProPrinter should be fine.